



MONTHLY MEMBERSHIP PROGRESS REPORT

District 27 B2

Results as of: 6/30/2017

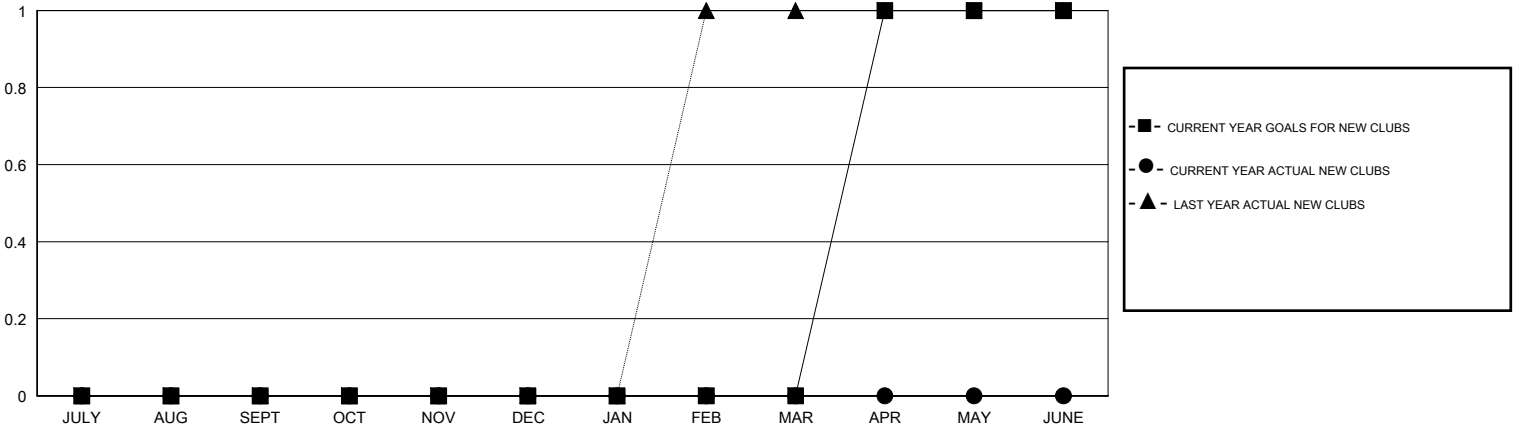
GMT: OPEN

LOCATION WISCONSIN

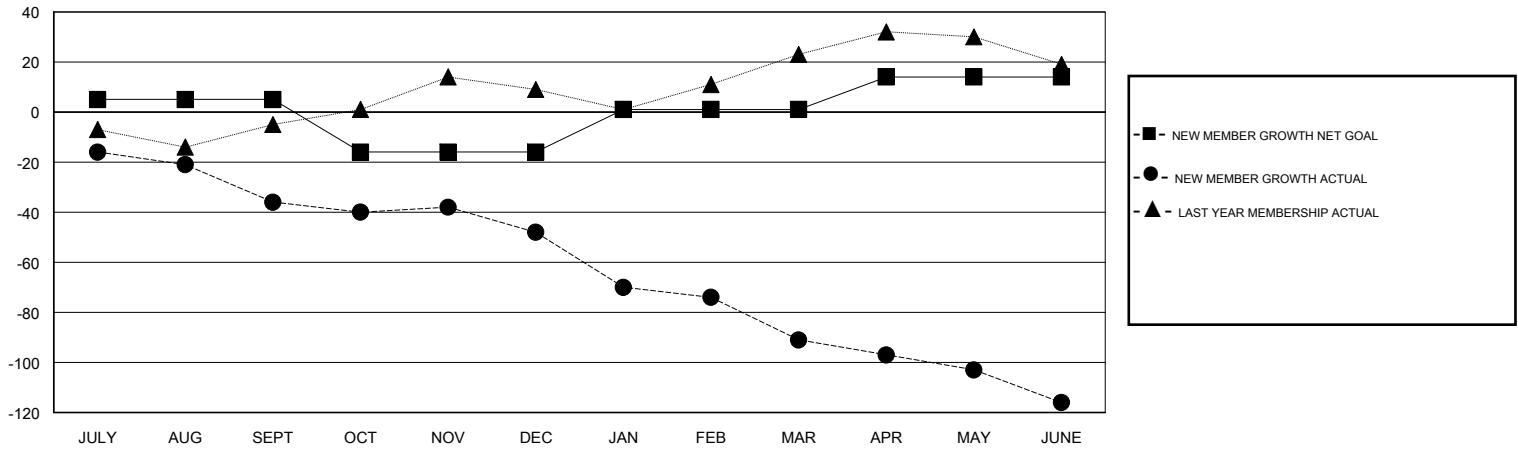
GMT CA

Clubs				Members			
RESULTS FOR 2016-2017				RESULTS FOR 2016-2017			
QUARTER	NEW CLUB GOAL	NEW CLUBS	DROPPED CLUBS	QUARTER	NEW MEMBER GROWTH NET GOAL (not reinstated or transfers)	NEW MEMBER GROWTH ACTUAL (not reinstated or transfers)	DROPPED MEMBERS ACTUAL (including transfers)
JULY/AUG/SEPT	0	0	0	JULY/AUG/SEPT	5	34	70
OCT/NOV/DEC	0	0	0	OCT/NOV/DEC	-21	31	43
JAN/FEB/MAR	0	0	0	JAN/FEB/MAR	17	22	65
APR/MAY/JUNE	1	0	0	APR/MAY/JUNE	13	49	74

GOALS AND ACTUAL NEW CLUBS CUMULATIVE



GOALS AND ACTUAL MEMBERS CUMULATIVE



DROPPED CLUBS: 0	53 CLUBS OF 70 ADDED 1 OR MORE NEW MEMBERS	<u>GENDER DISTRIBUTION</u>	
DROPPED MEMBERS		MALE	1,896 (82.72%)
DECEASED	42	FEMALE	396 (17.28%)
CLUB CANCELLED	0	TOTAL FAMILY UNIT MEMBERS	359
OTHER	209	FAMILY MEMBERS PAYING HALF DUES	182
TOTAL	251		

[CLICK HERE FOR CUMULATIVE MEMBERSHIP DATA](#)